

Brand new NC3000 series

Wide roughing coverage turning grade for steel and stainless steel

NC3030

CVD
Brand-new



NC3030

NC : CVD
PC : PVD

3 : P(Steel)
6 : K(Cast iron)
8 : S(HRSA)
9 : M(Stainless steel)

0 : Turning
5 : Milling

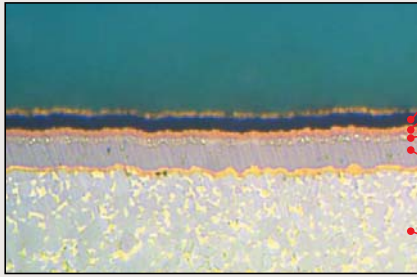
ISO Grade
P30



Wide roughing coverage turning grade for steel and stainless steel

NC3030

NC3030 CVD coating film

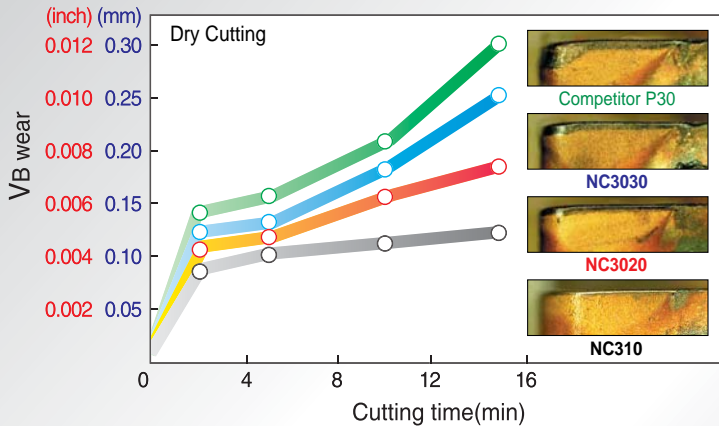


Al₂O₃	Suitable for high speed cutting
Bonding layer	High bonding strength coating layer for high stability
TiC	Better wear resistance in low speed machining
TiCN	Better wear resistance & anti chipping layer based on micro grain MT-CVD coating technology
Substrate	P30 tough carbide substrate

NC3030 test examples

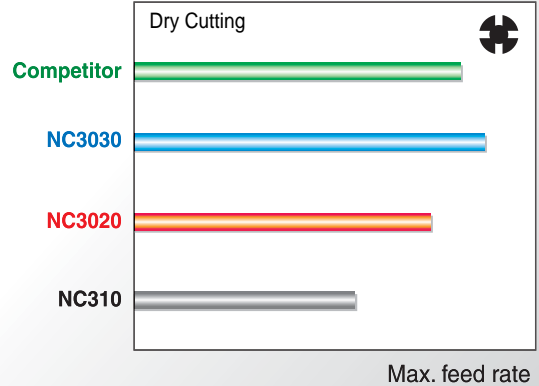
Wear resistance

	Metric	Inch
Designation	CNMG120408-HM	CNMG432-HM
Workpiece	42CrMo4	AISI4140
V	200m/min	660sfm
f	f=0.3mm/rev	f=0.012ipr
D.O.C	2.0mm	0.08inch



Shock resistance

	Metric	Inch
Designation	CNMG120408-HM	CNMG432-HM
Workpiece	42CrMo4	AISI4140(4 grooves)
V	100m/min	330sfm
f	variable	variable
D.O.C	2.0mm	0.08inch



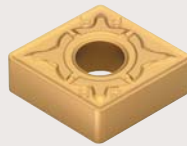
Chip breaker match for NC3030

1. Chip breaker match with NC3030

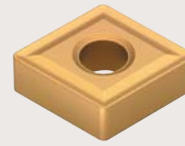
1st



HM (Medium)

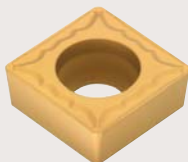


HR (Roughing)



B25 (Medium)

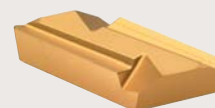
2. Various geometries for NC3030 are available



HMP (Positive insert)



SP (Saw-man insert, Parting off)



KNUX

Wide roughing coverage turning grade for steel and stainless steel

NC3030

NC3030 Machining examples

Designation	CNMG120408-HM	CNMG 432-HM	
Workpiece	Cf53	AISI1050	
	Automobile machine part		
V	94 ~ 330 m/min	310~ 1100 sfm	
f	0.25 ~ 0.4 mm/rev	0.01~ 0.016 ipr	
D.O.C	3.0 ~ 6.0 mm	0.12~ 0.24 inch	
Coolant	Wet		

Designation	CNMG120408-HM	CNMG 432-HM	
Workpiece	ASCM17H1		
	Machine part		
V	200 ~ 300 m/min	660 ~ 990 sfm	
f	0.2 mm/rev	0.008 ipr	
D.O.C	2.0 mm	0.08 inch	
Coolant	Wet		

Stock management item for NC3030

Shape	ISO	ASA	C/B	Stock	Shape	ISO	ASA	C/B	Stock
CCMT	09T308	32.52	C25	●	TNMG	160408	332	HM	●
CNMG	120408	432	VF	●		160408	332	B25	●
	120408	432	HM	●		220408	432	B25	●
	120408	432	HR	●		220408	432	HM	●
	120408	432	B25	●	WNMG	080408	432	VF	●
	120412	433	HR	●	KNUX	160405	-	R11	●
	190612	643	B25	●	SP500				●
	190612	643	HR	●	SPMR	120308	-	M	●
DNMG	150608	442	HM	●	CCMT	09T308	32.52	C25	●
SNMG	120408	432	HM	●					
	120408	432	B25	●					
	190612	643	HR	●					

● : Stock item ○ : Under preparing for stock
Order-made items are available.